



SPECIFICATIONS

- High Accuracy
- Compact
- Variety of Pressure Ports and Electrical Configurations
- Optional damper
- CE Compliant and Weatherproof
- Gage,Compound
- Excellent Stability

FEATURES

- Heavy Industrial
- Integral Pressure Cavity, No leakage
- Reverse Polarity Protection on Input
- With PNP type NO and NC 2-way output
- Up to $\pm 0.25\%$ Non-linear Accuracy
- Switching point accuracy $\pm 0.5\%$
- Up to $\pm 1.0\%$ Total Error Band
- -50°C to $+120^{\circ}\text{C}$ Operating Temperature

APPLICATIONS

- Industrial Process Control and Monitoring
- Construction Machinery
- Refrigeration Systems
- Automotive Test Stands
- Fire extinguishing system
- Pumps and Compressors
- Hydraulic/Pneumatic Systems

STANDARD RANGES

Range (psi)	Range (Bar)	Gage	Seal	Absolute	Compound
0...100	0...7	•			● S
0...150	0...10	•			● S
0...250	0...16	•			● S
0...500	0...35	•			• ● S
0...1000	0...70	•			• ● S
0...1500	0...100	•			•
0...2250	0...150	•			•
0...3000	0...200	•			•
0...5000	0...350	•			•
0...7500	0...500	•			•
0...10000	0...700	•			•
0...15000	0...1000	•			• ● S
0...22000	0...1500	•			• ● S
0 ... 36500	0...2500	•			• ● S

Note: Intermediate ranges available upon request. For "●S" ,plesae confirm with factory.

PERFORMANCE SPECIFICATIONS

Ambient Temperature: 25°C (unless otherwise specified)

PARAMETERS	MIN	TYP	MAX	UNIT	NOTES
Switching point accuracy	-0.5	±0.5	0.5	%F.S.BFSL	
Switching point resolution			0.1	%F.S.BFSL	
Pressure Cycles	1X10 ⁷			0~FS Cycles	
Switching load			(PNP) max. 200 mA		
Proof Pressure	2X		20k psi	Rated	
Burst Pressure	5X		20k psi	Rated	
Long Term Stability (1 year)	-0.25		0.25	%F.S	
Compensated Temperature	-20		85	°C	
Operating Temperature	-20		125	°C	
Storage Temperature	-40		125	°C	
Rise Time (10% to 90%)	<2ms (Voltage Output); <3ms (Current Output); Without Snubber				
Pressure Port Material	17-4PH+SST304 or 17-4 Integral Screw				
Shock	50g, 11msec Half Sine Shock per MIL-STD-202G, Method 213B, Condition A				
Vibration	±20g, MIL-STD-810C, Procedure 514.2-2, Curve L				

Notes: For custom configurations, please consult factory.

Pressure range under 0...70bar, customer to ensure venting through mating connector.

Compensated Temperature: The temperature range over which the product will produce an output proportional to pressure within the specified performance limits.

Operating Temperature: The temperature range over which the product will produce an output proportional to pressure but may not remain within the specified performance limits.

Storage Temperature: The temperature range over which the product can be stored safely in occasions without pressure applied or power input and remains rated performance. Beyond this temperature range may cause permanent damage to the product.

All configurations are built with supply voltage reverse and output short-circuit protections.

CE Compliance (just for reference)

EN 55022 Emissions Class A & B

IEC 61000-4-2 Electrostatic Discharge Immunity (8kV contact/15kV air)

IEC 61000-4-3 Radiated, Radio-Frequency Electromagnetic Field Immunity (10V/m, 80M-1GHz)

IEC 61000-4-4 Electrical Fast Transient Immunity (1kV)

IEC 61000-4-5 Surge Immunity (V+ to V-: ±2KV/42Ω; L to Case: ±1KV/12Ω; V- to V0: ±1KV/42Ω)

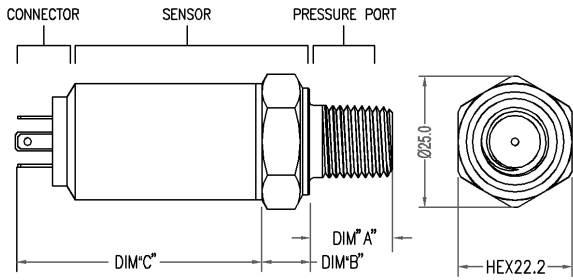
IEC 61000-4-6 Immunity to Conducted Disturbances Induced by Radio Frequency

Fields (150K~80MHz, 10V level for voltage output models, 3V level for current output model)

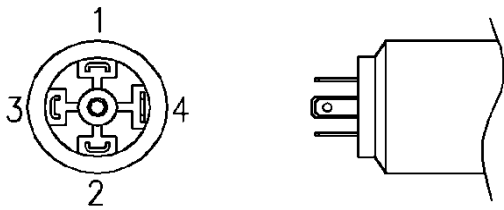
IEC 61000-4-9 Pulse Magnetic Field Immunity (100A/m peak)

For all CE compliance tests, max allowed output deviation ±1.5 %F.S. (Just Factory Testing)

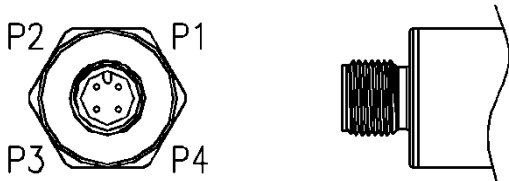
DIMENSIONS [mm]



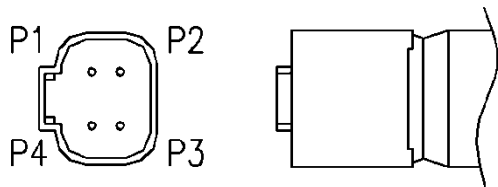
Form C Connector



M12X1 Connector



Deutsch DT04-4P



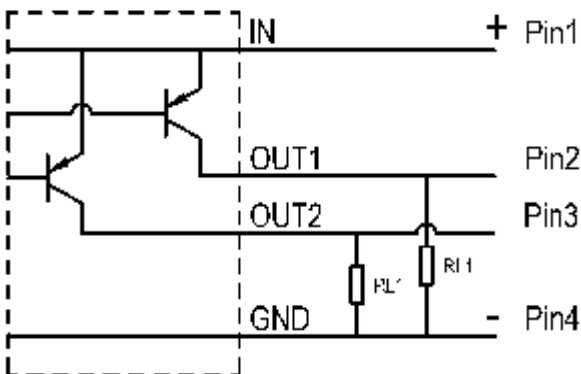
CODE	CONNECTION TYPE	DIM C (MAX)
3	Deutsch DT04-4P	2.09 [53.0]
4	M12	1.71 [43.5]
6	FORM C	1.97 [50.0]

CODE	PRESSURE PORT TYPE		
	PORT	DIM A	DIM B
1	G1/4 JIS B2351	0.472 [12.00]	0.3 [8.0]
2	M20 x 1.5 mm ISO 6149-2	0.661 [16.8]	0.3 [8.0]
3	1/4-18 NPT	0.600 [15.24]	0.3 [8.0]
4	7/16-20UNF FEMALE SAE J513 STRAIGHT THREAD WITH INTEGRAL VALVE DEPRESSOR	0.687[17.5]	0.3 [8.0]
5	M14 x 1.5 mm ISO 6149-2	0.433 [11.0]	0.3 [8.0]
6	1/8-27 NPT	0.390 [9.91]	0.3 [8.0]
7	M12 x 1.5 mm ISO 6149-2	0.433 [11.0]	0.3 [8.0]
8	M10 x 1.0 mm ISO 6149-2	0.374 [9.5]	0.3 [8.0]
9	G1/4 DIN 3852 FORM E GASKET DIN3869-14 NBR	0.512 [13.00]	0.3 [8.0]

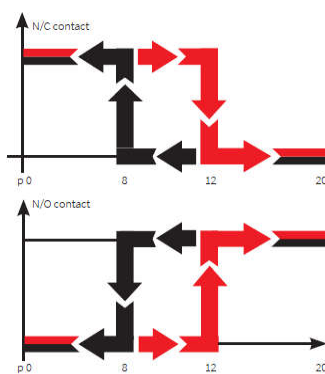
WEATHERPROOF

WEATHER-PROOF RATING		
CODE	CONNECTION TYPE	IP CODE
3	Deutsch DT04-4P	IP65
4	M12	IP67
6	FORM C	IP65

WIRING



Switch Mode:



N/C contact: When pressure is applied ($p_0 \rightarrow p_{max}$) the switch will disconnect the applied load as soon as the upper switching point is reached.

As the pressure falls ($p_{max} \rightarrow p_0$) the switch will connect the load as soon as the lower switching point is reached.

N/O contact: When pressure is applied ($p_0 \rightarrow p_{max}$) the switch will connect the applied load as soon as the upper switching point is reached.

With a fall in pressure ($p_{max} \rightarrow p_0$) the switch will disconnect the load as soon as the lower switching point is reached.

WIRING

Current Output Wiring					
CONNECTION	+SUPPLY	-SUPPLY	NC.PINS		P REF VENT
Deutsch DT04-4P	1	2	3	4	Hole Through Connector
M12	1	2	2	4	
FORM C	1	2	2	4	

CONNECTION TYPES

CONNECTION TYPES			
CONNECTION	DESCRIPTION	MATING HOUSING P/N	MATING TERMINAL PIN
Deutsch DT04-4P		REC, 4P, BUSBAR, NICKEL	-
M12	BINDER SERIES 713, 09 3431 77 04 OR EQUIV	4-POS FEMALE Connector	-
FORM C	INDUSTRIAL STANDARD 8.0MM FORM C	HTP AHB6733 3+PE	-

※ Notes: Transmitter of gage pressure type requires vent to atmosphere on the pressure reference side.

This is accomplished via cable from the transmitter (the end of the cable should be terminated to clean and dry area) or through the customer mating connector/cable assembly which has internal vent path.

ORDERING INFORMATION

M63-	250B	4	1	0	1	9	200B	200B	G
Model	Pressure Range	Connection	Port Material	Snubber	Label	Pressure Port	Set Point	Reset Point	Pressure Type
M63	0...500psi B= Bar M= Mpa P= PSI K= Kpa	3= Deutsch DT04-4P 4= M12 6= FORM C X= Customer Special	1= 304Screw+ 17-4 Diaphragm 2= 17-4 Integral Screw X= Customer Special	0= No Snubber 1= With Snubber	0= No Label (OEM) 1= Adhesive Label 2= Laser Marking	1= G1/4 JIS B2351 2= M20 x 1.5 3= 1/4-18 NPT 4= 7/16-20UNF FEMALE SAE 5= M14 x 1.5 6= 1/8-27 NPT 7= M12 x 1.5 8= M10 x 1.0 9= G1/4 DIN 3852 A= G3/8 JIS B2351 X= Customer Special	Specify a set point in PSI or Bar. The value must be within the pressure range selected above. Example: 200bar	Specify a reset point in PSI or Bar. The value must be within the pressure range selected above. Example: 185bar	G= Gauge C= Compound